



 : Melbourne
Tikkun Olam Makers

May 24-26, 2019

What is TOM?

Tikkun Olam Makers (TOM) is a global movement of innovators that creates and disseminates affordable solutions to neglected challenges of people with disabilities.

TOM works by connecting Need-Knowers (individuals living with a deep understanding of neglected challenges, often an individual living with a disability) with teams of Makers (problem solvers, engineers, designers, developers, health professionals etc.) to create public domain assistive technology solutions.

TOM is courageously pursuing a 10-year vision to positively impact the lives of 250 Million people worldwide.

37 

Communities

18 

Countries

450+ 

Prototypes

3,500+ 

Volunteers




TOM: Melbourne

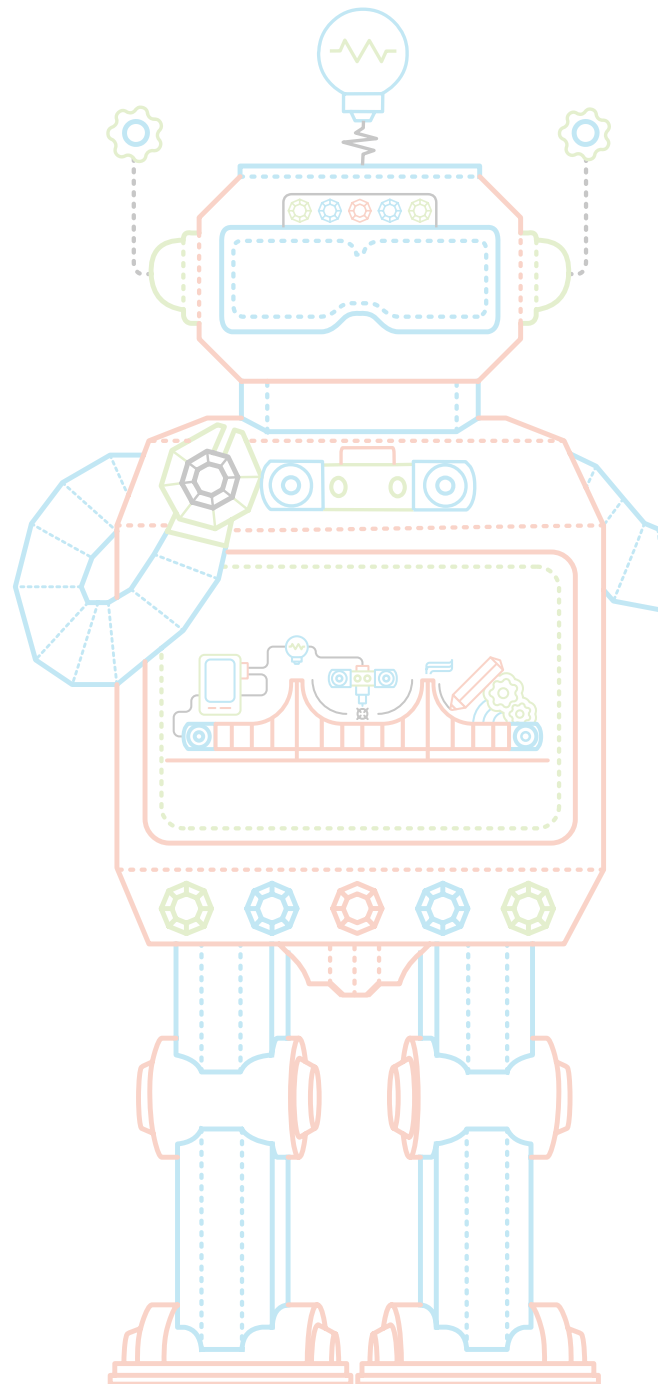
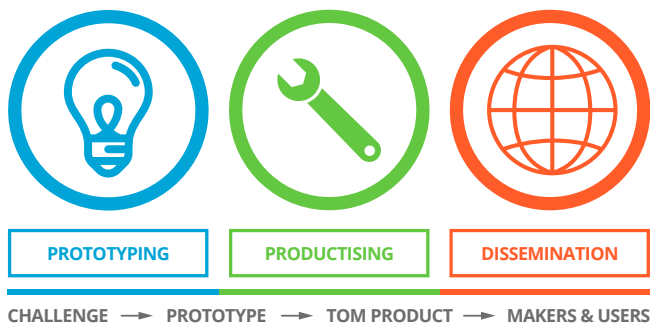
TOM: Melbourne aims to provide all Australians living with a disability access to affordable solutions to their neglected needs. Founded in 2016, TOM: Melbourne is made possible by Debbie Dadon AM, together with government, corporate, philanthropic and community partnerships.

TOM: Melbourne is one of the leading TOM communities, which in 2018 piloted and launched the first Developer Groups program, taking prototype to product, as well as the first ever TOM @ University program embedded into design, occupational therapy and engineering curriculums in partnership with Swinburne University of Technology.

Since its launch in 2016, TOM: Melbourne have created 29 unique prototypes across two 72-hour Makeathons, 4 final TOM Products during the Developer Groups cycle and 7 prototypes at the TOM @ University program.

TOM Process

-  Prototyping (the Makeathon) is the first phase of the TOM process. It begins by identifying neglected problems and culminates in delivering TOM Prototypes. The highlight of the Makeathon Phase is a marathon of innovation called a TOM Makeathon event.
-  Productising (Developer Groups) is the second phase of the TOM Process where teams upgrade TOM Prototypes into TOM Products, i.e. into makerspace-ready Digital Product Files, ready for dissemination to users. Developer Groups are formed at the completion of the Makeathon and consist of university students, graduates, corporates and other professional Makers.
-  Dissemination is the third phase of the TOM process and is about getting solutions directly into the hands of those who need them. It begins with downloading a Makerspace-Ready Digital Product File and ends with the delivery of a TOM Product to its users.



TOM @ University

TOM @ University is the first of its kind in Australia, integrating the TOM Process into design, engineering and occupational therapy curriculums. The program takes unmet challenges presented by the Need-Knowers and creates open-products, available for all on the TOM web platform.

TOM @ University provides students with a unique opportunity to work with a real individual and to see the impact and outcome of their work first hand.

For more information contact:
abbie@tommelbourne.com.au

Founding Partners:

